

EXPERIENCE THE HARMONY OF
MODERN LIVING WITH PEACEFUL ATMOSPHERE.

Built Around What Truly Matters

Parklane Villas



DESIGNED FOR EXCELLENCE



PRIVATE & PEACEFUL LIVING

PARKLAND VILLA, Designed for those who seek private, peaceful living, these residences offer a true sanctuary of calm just minutes away from Perinthalmanna town. It is an ideal retreat that blends modern convenience with the quiet comfort of a secluded home.

WELCOME NOTE

Not a Gated Community. A Lifestyle Choice. Elite living in the heart of Perinthalmanna

Parklane is envisioned as a space where life becomes simpler, clearer, and more intentional. Where your surroundings support meaningful connections, focused work, and a sense of calm that stays with you.

With nature around you and distractions kept away, your home becomes more than a place to stay — it becomes a space to reset, think, and live fully.

Because when you're free from noise, you can give your attention to what truly matters.





A MASTERPIECE IN THE HEART OF CITY

NATURE-INTEGRATED DESIGN

Every villa is designed to harmonize with its natural surroundings. Lush gardens, water features, and open courtyards create a seamless connection between indoor and outdoor living.

Boutique Villa Cluster

EACH VILLA IS A MASTERPIECE OF PRIVACY AND DESIGN.



1,650–2,400 sq.ft. villas with private courtyards.



Architecturally designed for Kerala's climate.



Private gardens with fruit trees & medicinal plants.



Premium finishes and sustainable



Natural open well for water security.

LIFE IN PARKLANE

Always elite and Happiness





Amenities



PRIVACY

Only a few homes. No crowd, no congestion. Your own sanctuary, surrounded by nature.



NATURE-INTEGRATED LIVING

Fruit gardens, medicinal plants, green surroundings. Birds, calm, and natural beauty.



LOW MAINTENANCE LIFESTYLE

No clubhouse burden. No unnecessary monthly costs. Independent, hassle-free living.



INDEPENDENT PREMIUM LIVING

Not boxed like apartments. Not crowded like big gated layouts. Truly yours.



AMENITIES

Personal Wellness Studio

Offers a premier dedicated workout space meticulously designed to serve as your personal sanctuary for growth and recovery. Experience the invigorating benefits of our ice bath provision, perfectly balanced by a calm, distraction-free environment that lets you shut out the noise of the world. More than just a gym, it is a place to recharge your body and mind - every day.

01

Dedicated workout space.

02

Ice bath provision.

03

Calm, distraction-free environment.

04

A place to recharge your body and mind.

AMENITIES

Nature Integrated Design

Every villa is designed to harmonize with its natural surroundings. Lush gardens, water features, and open courtyards create a seamless connection between indoor and outdoor living.

- 01 Private gardens with fruit trees
- 02 Collection of medicinal plants
- 03 Calm and green surroundings





AMENITIES

Water Security & Sustainability

Each villa features a natural open well, ensuring long-term water security and independence.

- 01 Natural open well
- 02 Naturally water-rich and ideal for a well
- 03 Sustainable landscape design

AMENITIES

A Home Designed Around You

At Parklane Villas, we go beyond construction to translate your aspirations into a home that truly understands your lifestyle.



Psychology-led spatial planning.

Layouts designed to reduce stress, improve clarity and enhance daily comfort.



Personal lifestyle mapping

Your routines, priorities, and habits influence how your home is structured.



Balance of privacy and connection

Create zones for focus, family, rest, and personal growth.



Road Map



Location & Neighbourhood

JUST 1 KM FROM PERINTHALMANNA TOWN.



MAJOR HEALTHCARES

- Moulana Hospital, Perinthalmanna
- KIMS Alshifa Super Speciality Hospital
- Dr Balagopal Memorial Hospital
- Abate Eye Hospital, Perinthalmanna

+ many more



NOTABLE SCHOOLS

- Aura Global Schools
- ISS English Medium Senior Secondary School, Perinthalmanna
- Sacred Heart CMI Public School
- Presentation HSS, Perinthalmanna

+ many more



MAJOR SHOPPING CENTRES

- Secura Centre
 - MARKETCITY, Perinthalmanna
- & more Restaurants, malls, markets



Tropical & Pleasant Climate

Villa TYPE - A

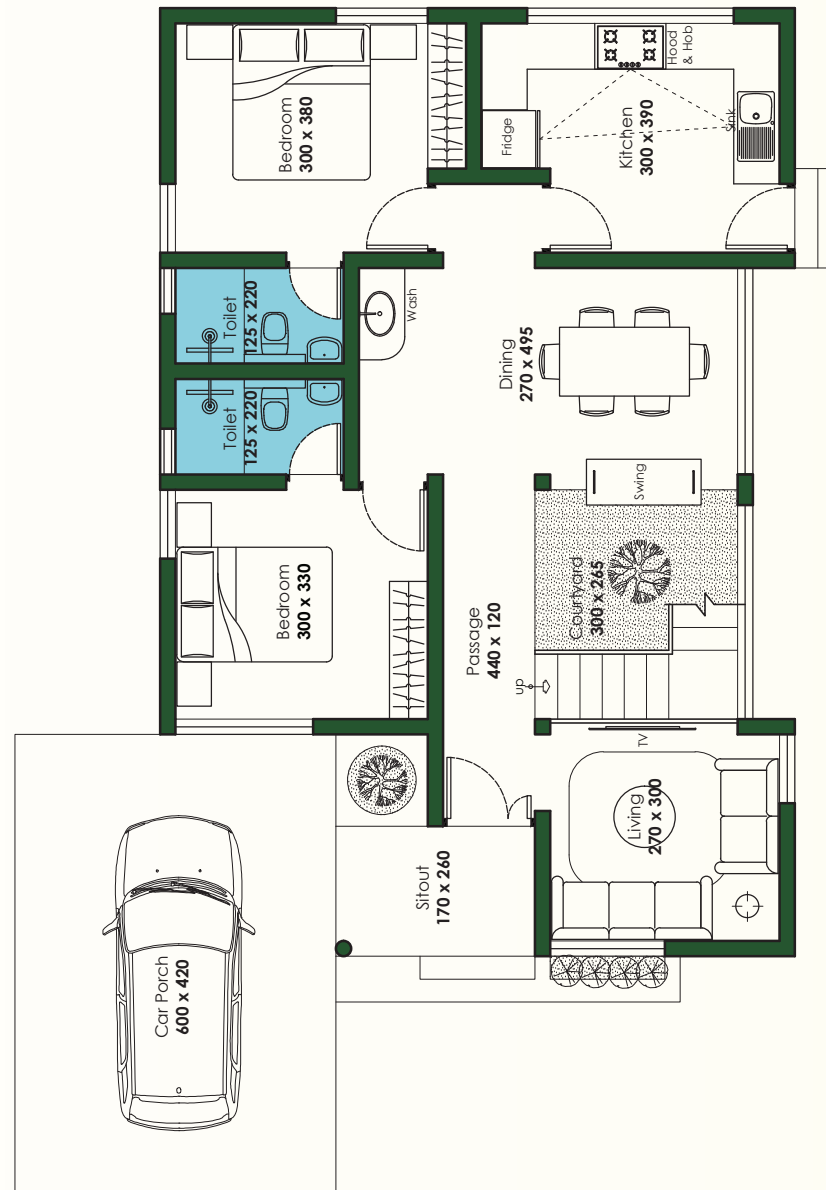
Ground Floor: **1257 Sq.ft**

First Floor: **363 Sq.ft**

Total Area: **1620 Sq.ft**

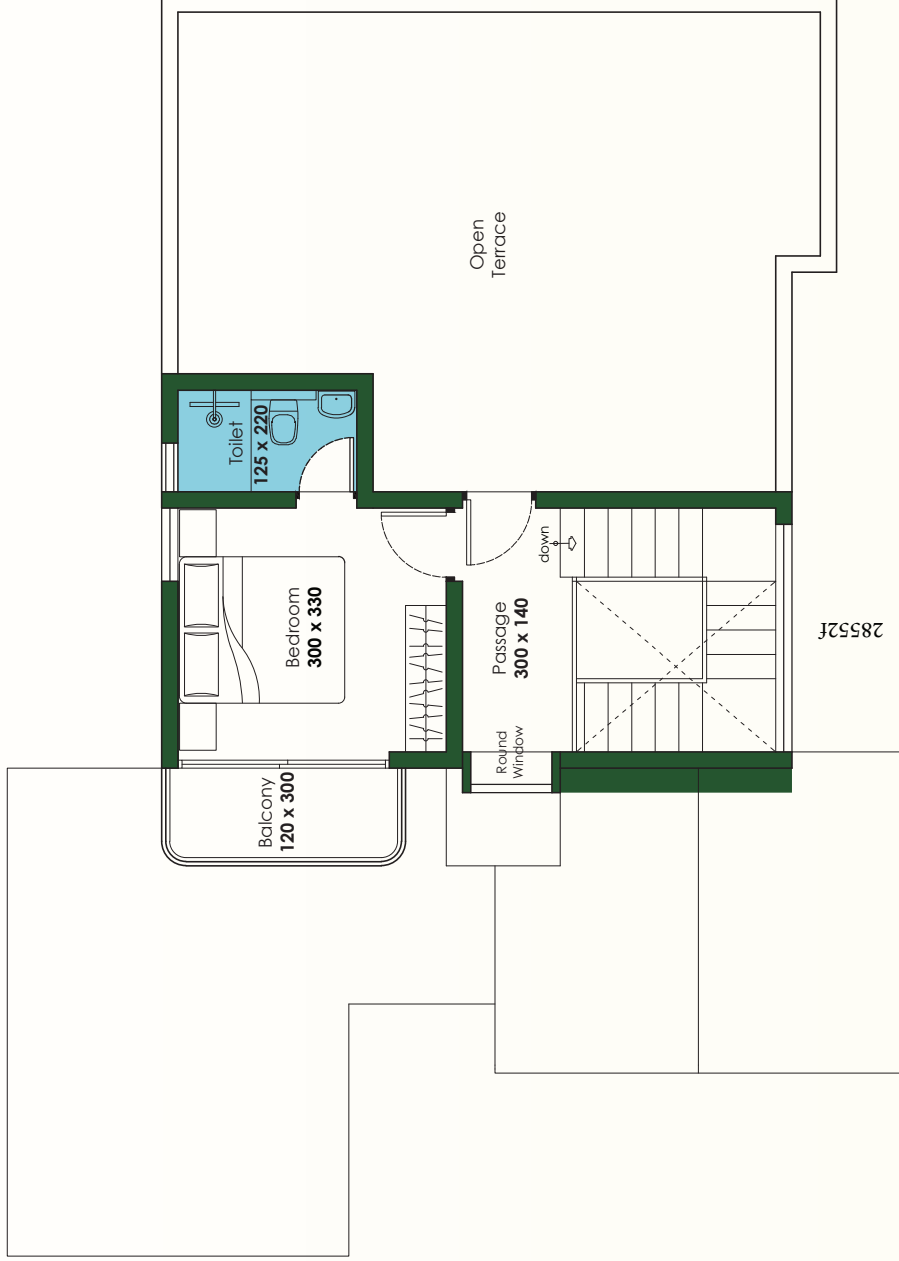
PARKLANE
EXPERIENCE
MODERN LIVING
WITH
PEACEFUL
ATMOSPHERE.

**GROUND FLOOR
PLAN**



FIRST FLOOR PLAN

First Floor: 363 Sq.ft



Villa TYPE - B

Ground Floor: **1281 Sq.ft**

First Floor: **729 Sq.ft**

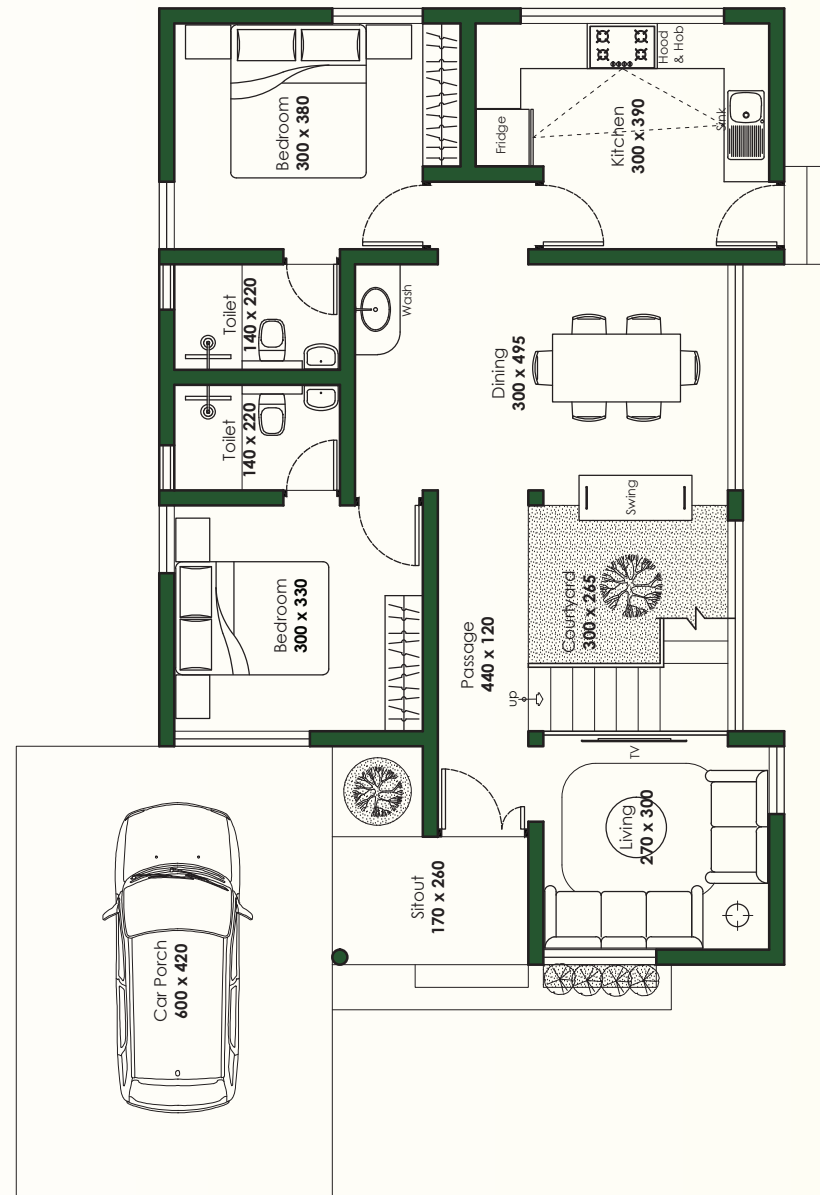
Total Area: **2010 Sq.ft**

PARKLANE
EXPERIENCE
MODERN LIVING
WITH
PEACEFUL
ATMOSPHERE.

**GROUND FLOOR
PLAN**

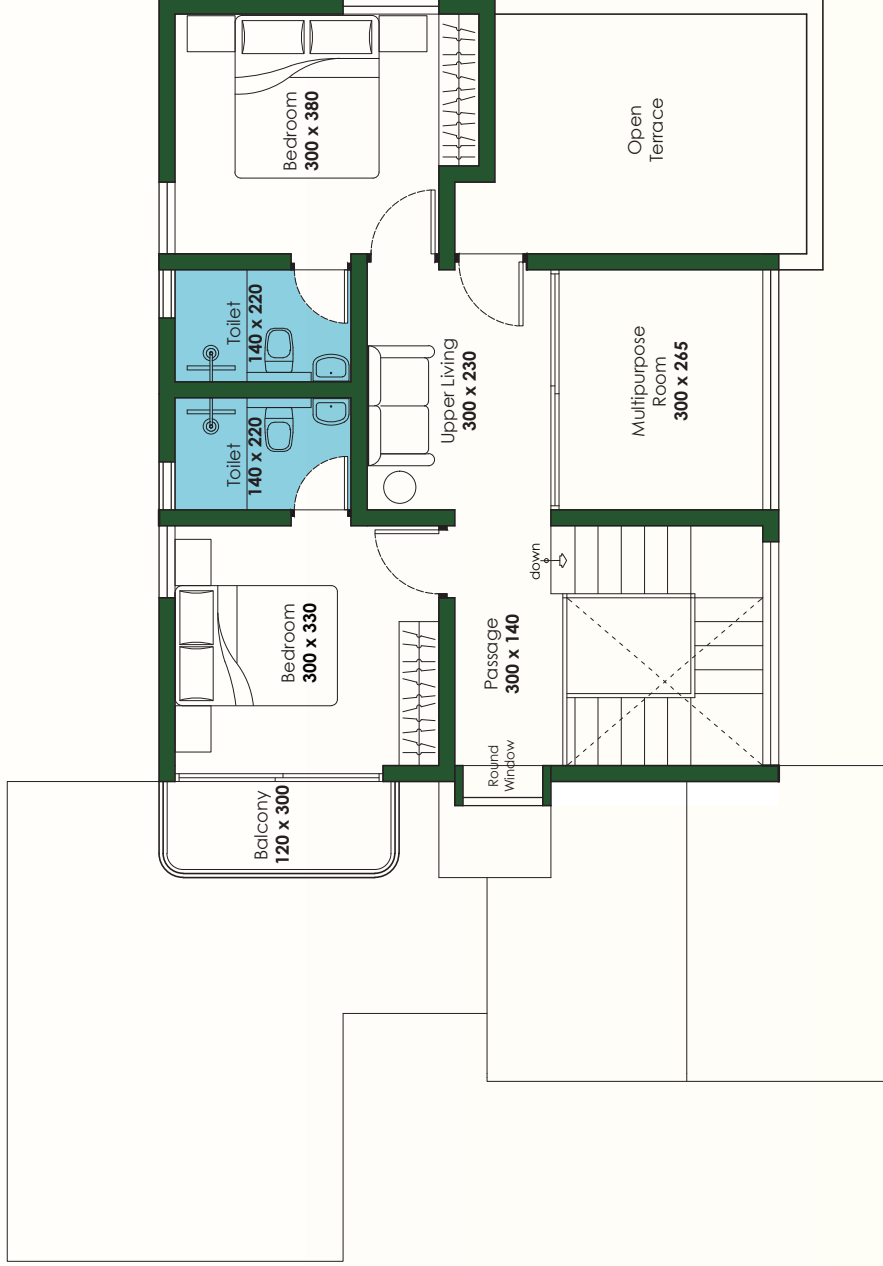


GROUND FLOOR PLAN



FIRST FLOOR PLAN

First Floor: 729 Sq.ft



Villa TYPE - A

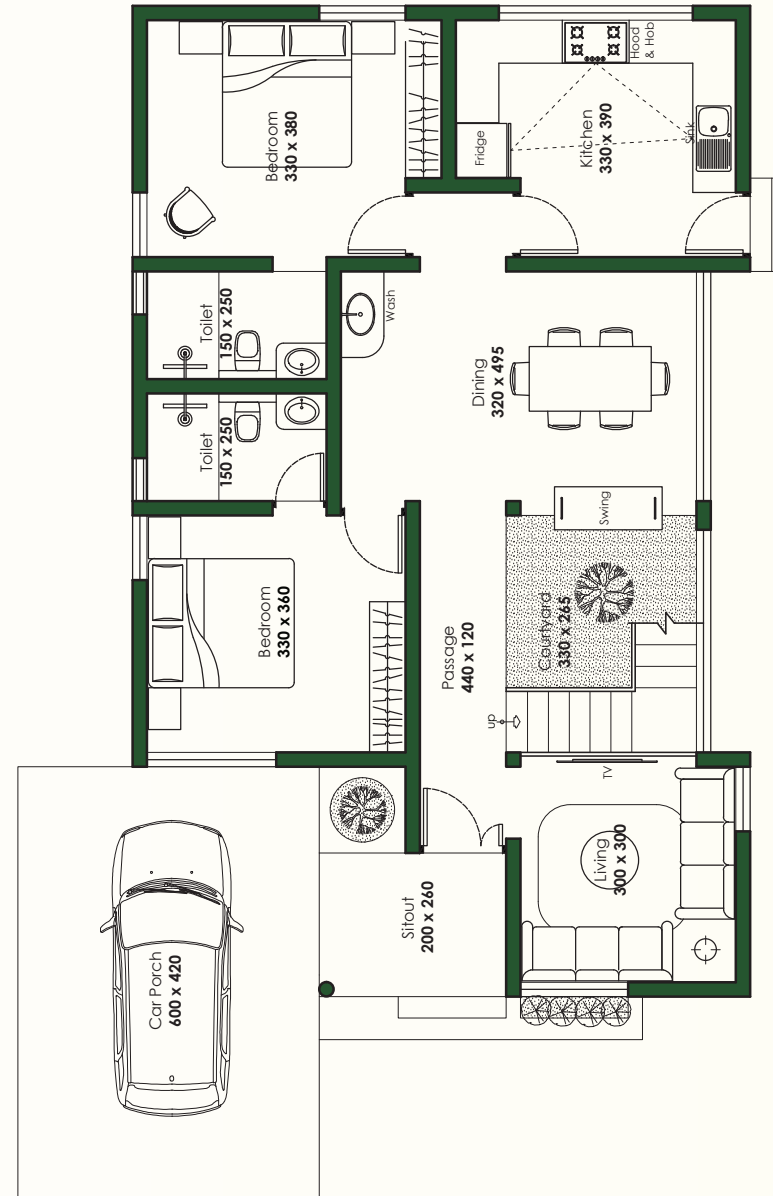
Ground Floor: **1407 Sq.ft**

First Floor: **993 Sq.ft**

Total Area: **2400 Sq.ft**

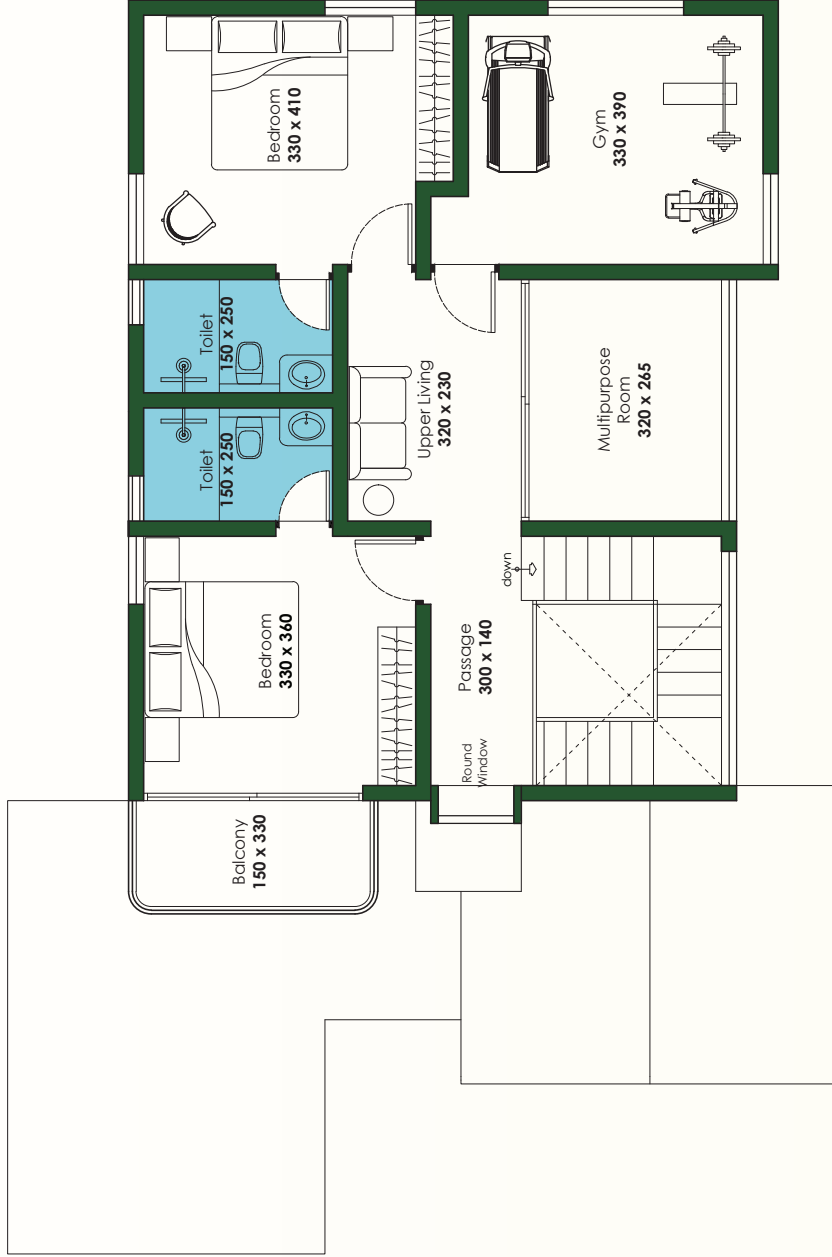
PARKLANE
EXPERIENCE
MODERN LIVING
WITH
PEACEFUL
ATMOSPHERE.

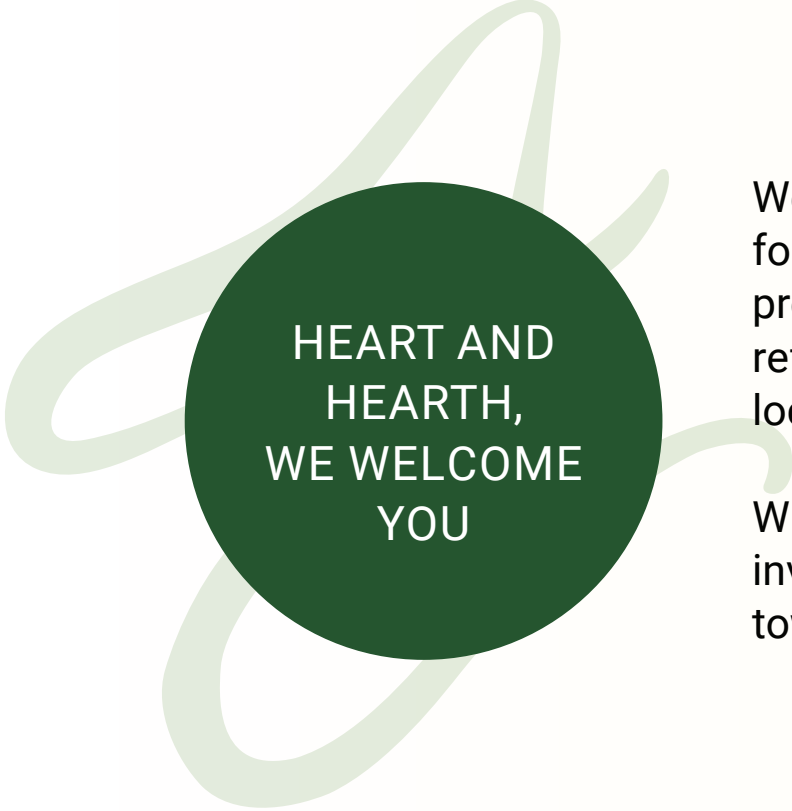
**GROUND FLOOR
PLAN**



FIRST FLOOR PLAN

First Floor: 993 Sq.ft





HEART AND
HEARTH,
WE WELCOME
YOU

We extend a heartfelt welcome to you, thanking you for considering Parklane Villas. Our commitment to providing an extraordinary living experience is reflected in our architectural designs and supreme locations.

With the promise of a valuable investment, we invite you to become a part of this exciting journey toward a life close to nature, yet steeped in luxury.



MAGNUM OPUS
PROJECTS.




ANEXIM BUILDERS & DEVELOPERS

CONTACT

+91 7025 744 173

OFFICE ADDRESS

Building No./Flat No.: 364/32, Sangeeta road,
Perinthalmanna, Malappuram, Kerala.
PIN Code: 679322

Follow Us:  [/anexim_engineering](https://www.facebook.com/anexim_engineering)